



## Techrider My Pussy Real Soft

### Kontakt Künstlerische Leitung:

Sonja Hartmann  
sonjahartmann@gmx.ch  
078 626 12 32

### Kontakt Technik:

Mariana Vieira Grünig  
mariana.gruenig@gmail.com  
079 904 38 98

### Team

1 light technician

1 stage designer

1 musician (sound)

1 performer

.....

"My Pussy Real Soft" is a theatre piece for one performer and a one musician and lasts about 1 hour.

The spatial concept provides for a frontal arrangement with a hanging metal ring and a cloth. The room is preferably black, with back walls (or cloth) to be used for projection.

Ideally, the room's measurements are:

Breite: c.a. 5m

Tiefe: c.a. 4m

Höhe: c.a. 4m

### Boden

Tanz- oder Schwingboden oder Bühnenboden Holz

### Ton/Licht

- 17 fresnel (3 mit violetterem Filter, 1 mit blauem Filter)
- 12 par
- 4 moving lights
- 1 Profilscheinwerfer mit rotem Filter
- Saallautsprecher für einfache szenische Beschallung
- Stromanschluss auf der Bühne
- Beamer (Kurzdistanz) bringen wir selber mit

### Bühnenbild

- Vorrichtung an der Decke (Hacken oder Barren) um einen leichten Metallring (1,49 m Durchmesser) aufzuhängen.

## Requisiten

- überdimensionale Sporttasche
- Metallring (2,40m Durchmesser) mit Tüllnetz
- aufblasbare Banane
- überdimensionale, goldene Pinzette
- Gymnastikball
- Yogamatte
- Theraband
- mechanischer Staubsauger
- Kondome
- Blumen glitzer
- Nicolas Cage-Kissen
- Sportflasche
- Handtuch
- Beamberbox, schwarz

## Height of hanging points (truss) not lower than 4.5 m high !!!

We will hang 1 metal ring (ca. Ø 1m 48) with climbing rope. The textiles are tied to the pipe with fisherman lines according to the plan and approx. 4 m above the ground.

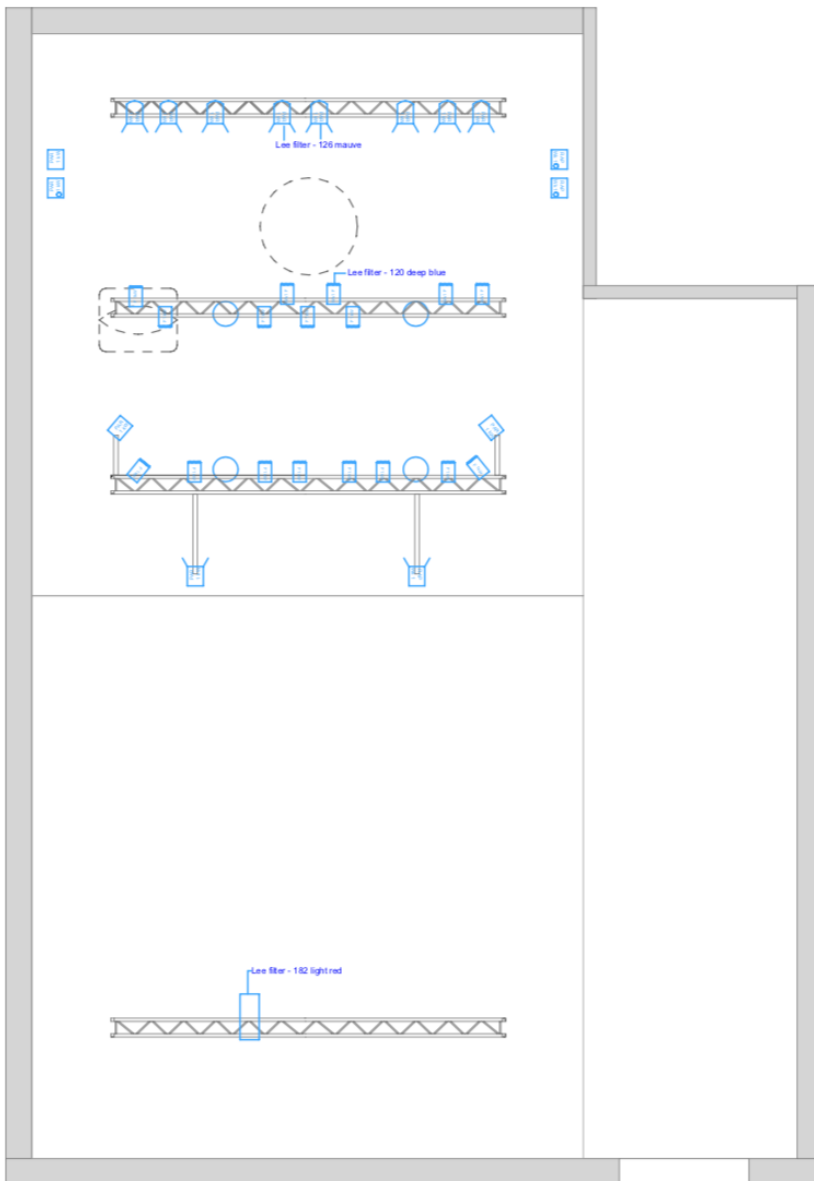
weigh approx. 2 kg.

We need:

- 2x wire ropes with loop so that the height can be adjusted ideally.



The lighting concept functions via a standard light, with front, rear light etc.



**Light Plan - My Pussy Real Soft**  
Premiere  
**02 September 2021, Postremise**

## Timing and Staff

The entire set installation takes one full working day (09:00-22:00).

On the day of arrival (even before the actual TE) Arrival technicians and our equipment.

1 technician who will show us around (parking lot etc.)  
and show us the room and explain everything briefly.

Set-up day

09:00 Unload

09:00 Hang everything                      2 People Light Tech, stage designer

13:00 Pause

14:00 Lighting and Patching until finished approx. 17:00

2 People Light Tech, stage designer

Short Pause for 1. Soundcheck              1 Person (sound)

Tag der Aufführung

09:00 2. Soundcheck                      1 Person (sound)

10:00 Prepare for Rehearsals

11:00 Warm-up

12:00 Rehearsal

17:00 End of rehearsal and prepare for Performance

Dismantle and Loading directly after the last performance (approx. 2h)

## **Light Cue List:**

Intensity of the lights has to be checked in each venue.

Before the show:

- entrance light
- L15 with blue filter

audience is seated. entrance light off.

**Q1**- L15 with blue filter

sound cue: 7 bells, princess comes out of the cocoon.

**Q2**- L15, L4, L9, L19, L20, L27, L28

“ich habe nur von dir geträumt”

visual cue - princess goes back into the cocoon - puts apron on.

out of the cocoon

**Q3**- L15, L4, L9, L19, L20, L27, L28

L10, L11, L12, L13, L14, L16, L17, L18, L21, L22, L23, L24, L25, L26, L36, L37

**Q4** - L34, L35 - manual up and down.

Sonja on her knees - include L29. Cleans her mouth to L34, L35

end of the song

**Q5** - L15, L9, L19, L20, L27, L28

L10, L11, L12, L13, L14, L16, L17, L18, L21, L22, L23, L24, L25, L26, L36, L37

BLACK - Video 1 - end of the video (21, 22 - light)

**Q6** (haarentfern) - L15, L9, L19, L20, L27, L28

L10, L11, L12, L13, L14, L16, L17, L18, L21, L22, L23, L24, L25, L26, L36, L37

sound cue: baywatch song

**Q7** - add to Q6 - L30-33 follow in red

BLACK - VIDEO 2

out of the cocoon

**Q8** - L15, L9, L19, L20, L27, L28

L10, L11, L12, L13, L14, L16, L17, L18, L21, L22, L23, L24, L25, L26, L36, L37

sound cue - ti amo

crossfade Q8 to L36, L37

end of ti amo, back to Q8

Sonja enters cocoon - Play sound "Hello Girls!"

music beat with side lights: L34, L35 (they remain on)

once music ends lights on:

**Q9** - L15, L9, L19, L20, L27, L28

L10, L11, L12, L13, L14, L16, L17, L18, L21, L22, L23, L24, L25, L26, L34, L35, L36, L37

Sonja drinks water: L34, L35 off

starts singing "Santa Claus is coming to town"

starts dimming off the lights

Sonja goes inside the cocoon

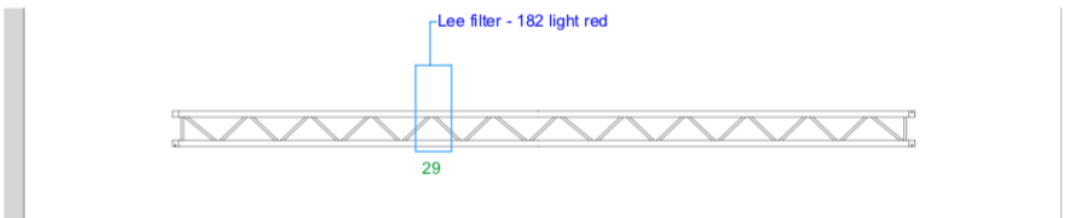
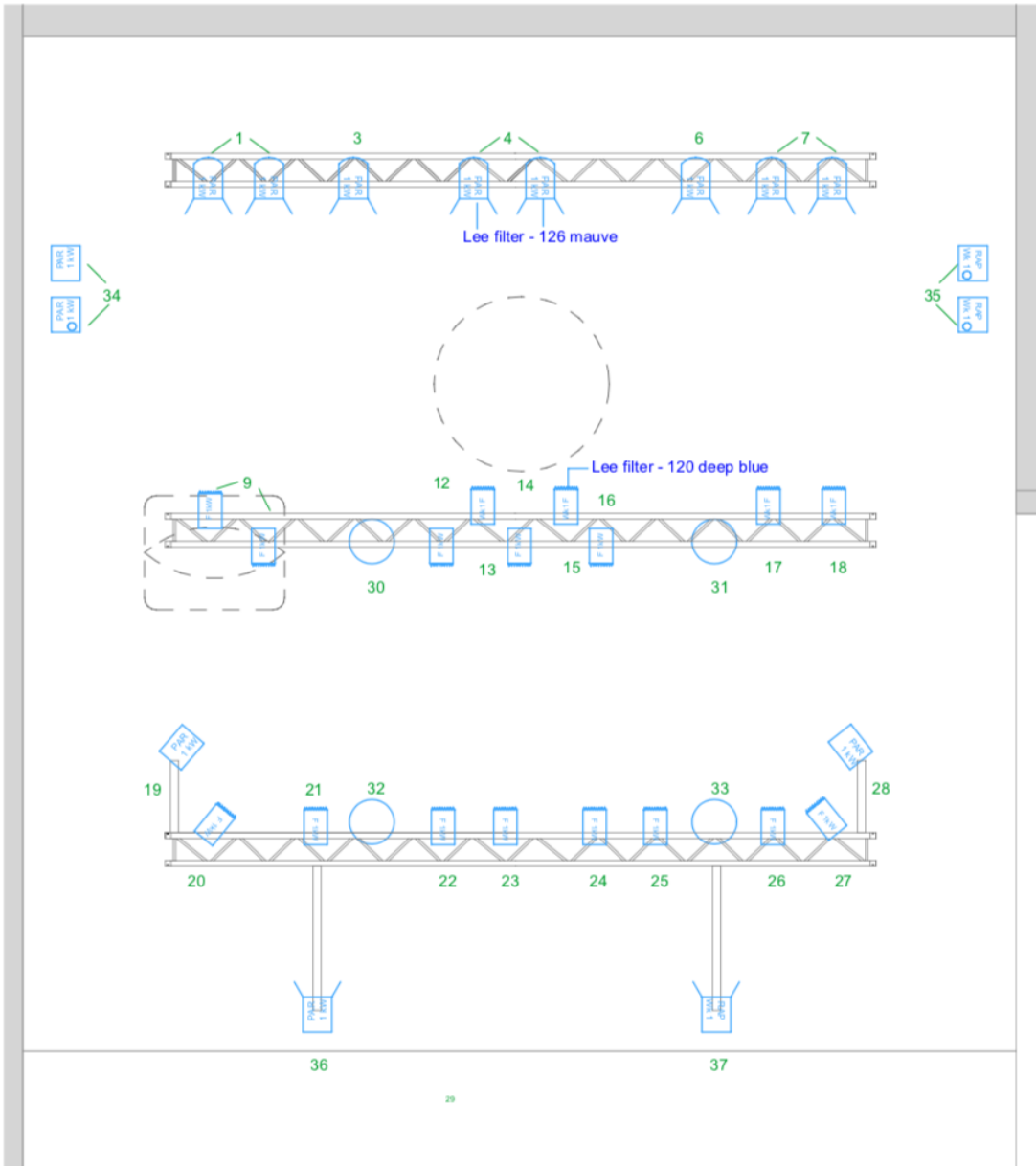
**Q10** - L15 (slow)

sound: describes clothes (weisse pulli, weisse hose - 21, 22.. )

BLACK (5 secs)

applause light

audience light



**Light Plan - My Pussy Real Soft**

Premiere

**02 September 2021, Postremise**